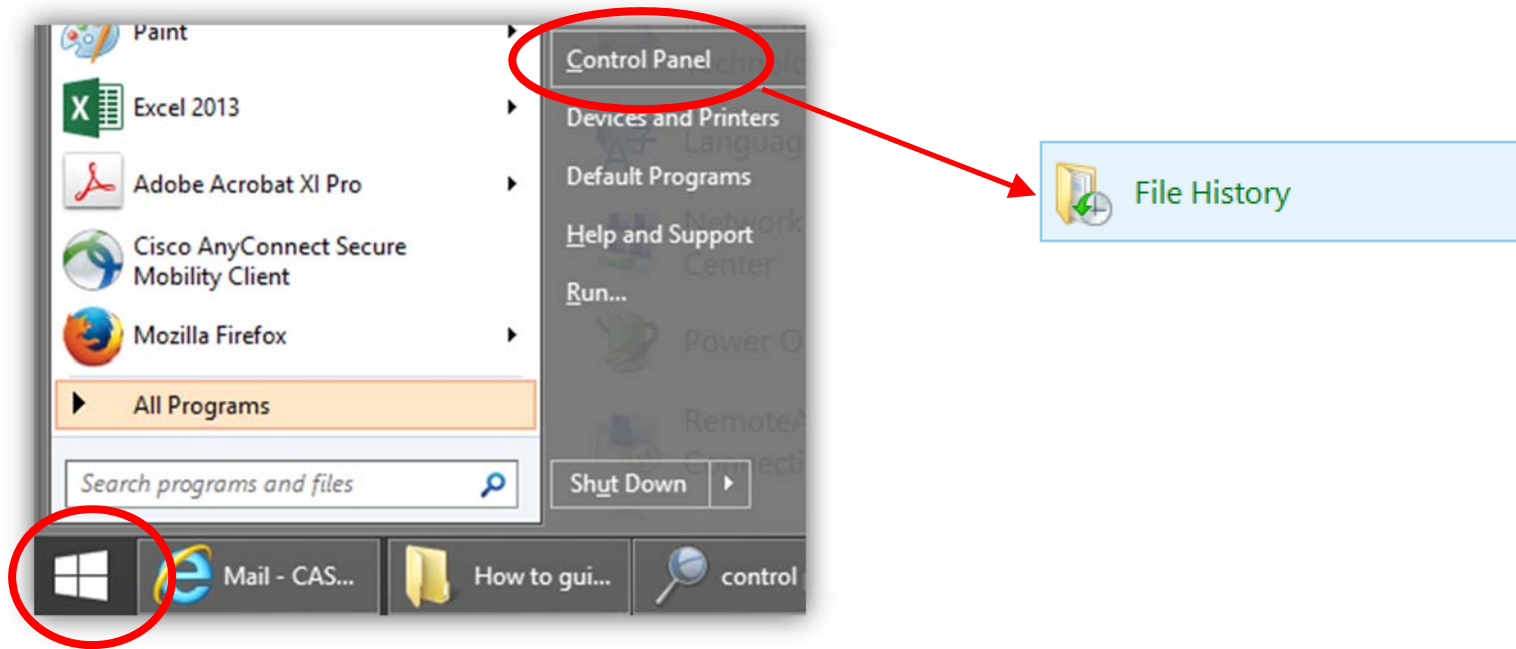


# Windows File History Setup Guide

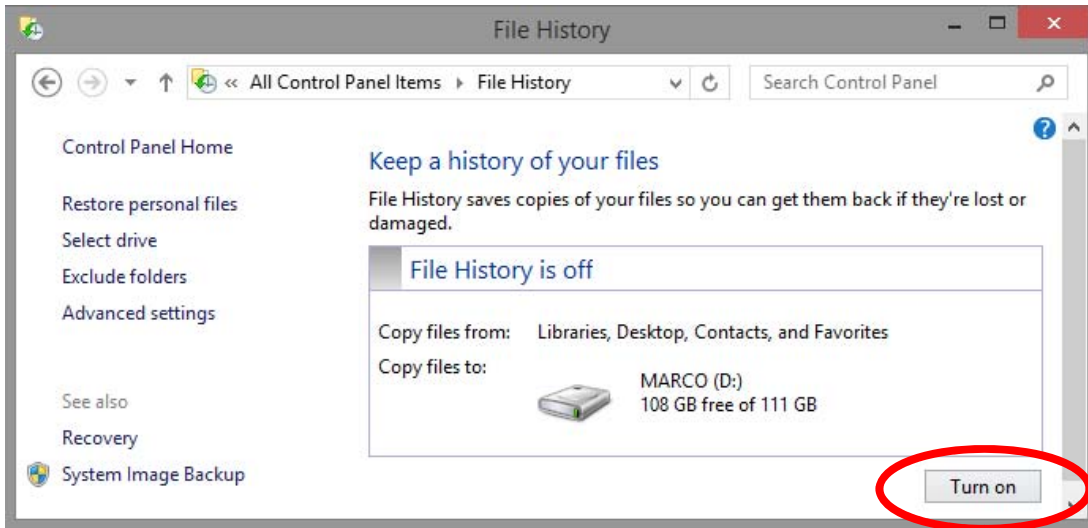
Connect your external drive

Go to Windows logo -> Control Panel -> File History

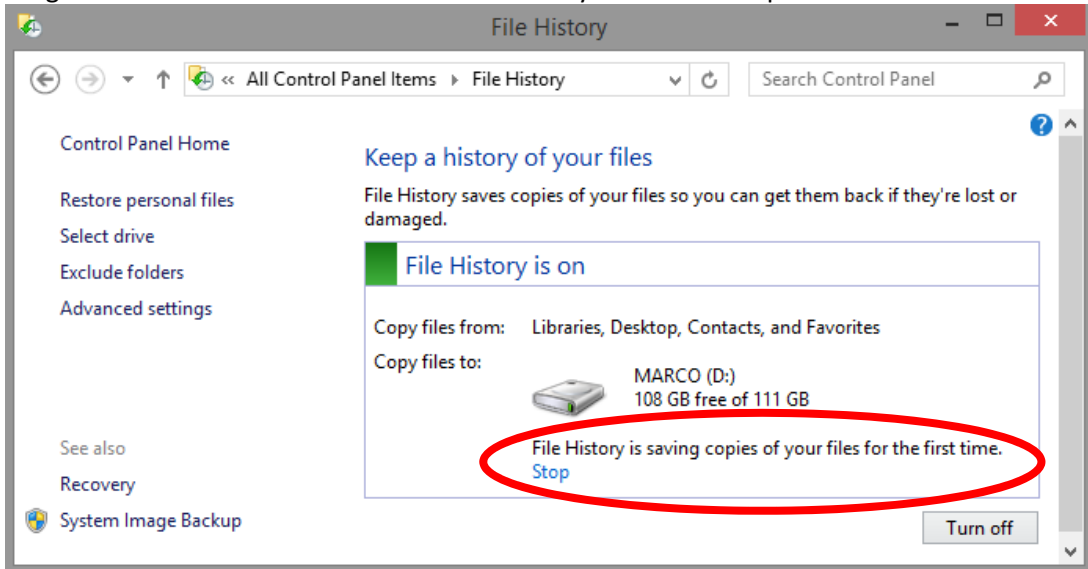


If you have multiple external drives, click Select drive to select where you want to back up your files.

Click "Turn On"



Progress will be written under the hard drive as your files are copied



When backup is done, it should look like the image below. You can click on Advanced Settings and choose several options

